

寄生于牛蛙的隐弯属吸虫一新种

(复殖目: 枝腺科)

马玲珊

吕军仪

(广州师范学院生物学系)

(中山大学生物学系)

摘 要

本文对寄生于广州地区的牛蛙消化道的一种吸虫新种岭南隐弯吸虫进行详细描述。此种吸虫的形态特征与枝腺科隐弯属的特征相似。隐弯属为国内新纪录。这样枝腺科的属在中国增加到12个属。

关键词 新种, 枝腺科, 隐弯属, 岭南隐弯吸虫

1986年4~8月, 在广州市西郊的牛蛙养殖场, 发现寄生于牛蛙(*Rana catesbiana* Shaw)肠道中的一种吸虫, 经研究隶于枝腺科隐弯属吸虫新种。这一属为中国新纪录。现将新种描述如下。量度单位一律为mm。新种的模式标本保存在广州师范学院生物学系动物学教研室。

岭南隐弯吸虫 *Cryptotropa lingnanensis* sp. nov. 新种(图1)

宿主: 牛蛙(*Rana catesbiana* Shaw), 寄生部位: 肠。

采集日期: 1986年7月20日。采集地点: 广州市西郊。模式标本: 正模M9801, 保存于广州师范学院生物学系动物学教研室。

虫体略呈椭圆形, 前端稍尖, 后端略宽, 体表披微小刺, 前端刺数目较多且粗, 往后小刺数目逐渐减少。体长1.1865~1.3755(1.281), 体宽0.6085~0.7035(0.656)。口吸盘端腹位, 近球形, 大小0.2425~0.2525×0.2400~0.2425(0.2475×0.2412), 后接前咽, 前咽长度为0.0250, 咽中等, 大小为0.0375×0.0350, 食道紧接咽, 长度为0.0625, 肠支宽大, 伸达腹吸盘的前缘。腹吸盘小, 位于体前端1/2处的后缘, 大小为0.1450~0.1500×0.1400~0.1450(0.1475×0.1425), 腹口吸盘的大小比例为1:1.68。睾丸二个, 发达呈卵圆形, 位于体末端, 左睾丸大小为0.2415~0.2475×0.2475~0.3045(0.2445×0.2760), 右睾丸大小为0.2310~0.2465×0.3050~0.3360(0.2388×0.3205)。阴茎囊发达, 略呈弯曲球棒状, 位于肠分叉处前缘至口吸盘的左侧中间水平, 内有膨大的贮精囊、前列腺和阴茎, 生殖孔开口于口吸盘左侧的中间水平处。卵巢呈卵圆形, 位于肠分支处后缘, 腹吸盘的前方, 大小0.0675~0.075×0.0775~0.0875(0.0713×0.0825), 受精囊近球形, 位于腹吸盘背面与卵巢之间, 大小0.0575×0.0650; 卵黄腺

本文1988年10月29日收到

发达,分布于口吸盘后缘至睾丸前缘的体两侧及睾丸前缘的体中间。由卵巢的左腹角发出输卵管,伸向腹吸盘背侧成卵模,卵黄总管、受精囊均通入卵模前段。子宫接卵模,穿过腹吸盘的背后面,并在其后方体右侧作4~5个盘曲后,再由体左侧弯曲向前,直达生殖孔。子宫下降支不过睾丸,子宫末段与阴茎囊略作平行,子宫内有较多的虫卵,呈淡黄色,大小 $0.0375\sim 0.0400\times 0.020\sim 0.0225(0.0388\times 0.0213)$ 。排泄囊呈V形,排泄孔开口于体末端。

本种吸虫与寄生于日本的一种海螵 *Polypedates buergeri* 的 *Cryptotropa kuretanii* (Ozaki, 1926) Strand, 1928^[1]较为相近,但后者的卵巢位于腹吸盘的后方,睾丸小,位于体后1/3处前,卵黄腺分布区域直达虫体的尖端。子宫盘曲从卵巢的左侧向前方盘曲至肠分叉处,沿体右侧往后折曲,穿过左右睾丸之间,再沿左睾丸的右上方向体左侧作盘曲直达生殖孔。排泄囊发达,位于卵巢至体末端之间。本种吸虫与后者在形态结构上差异甚大。而本种吸虫虽与 *Opisthioparorchis boheaensis* 相似,但后者卵巢位于腹吸盘的右下方,盲肠支伸达睾丸前方,排泄囊呈“1”形,它们两者有明显差别,故确认为新种,定名为岭南隐弯吸虫 *Cryptotropa lingnanensis*。

枝腺科(Lecithodendriidae Odhner, 1910)吸虫在中国已报导的有11个属^[2],但 *Cryptotropa* Strand, 1928这一属,国外报道的只有一种吸虫^[3],国内仍未见报道过,故此种吸虫的发现作为本属在国内的新纪录,这样枝腺科吸虫在中国就增加到12个属。

参 考 文 献

- [1] Holl F J, J. *Helm.*, 6(1928), 3, 175~182
- [2] 陈心陶等, 中国动物志, 扁形动物门 吸虫纲 复殖目(一), 科学出版社, 1985, p.671~688
- [3] Yamaguti S, *Synopsis of digenetic trematodes of vertebrates*, Keigaku Publishing Co., Tokyo, 1971, 339~365

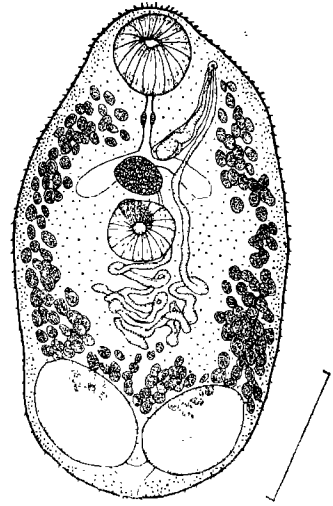


图1 岭南隐弯吸虫新种
Fig.1 *Cryptotropa lingnanensis* sp. nov.
(图中线段相当于0.4 mm)

A New Species of Genus *Cryptotropa* Strand from Frog, *Rana catesbiana* in China (Digenea: Lecithodendriidae)

Ma Lingsun* Lu Junyi

A new species of *Cryptotropa* from frog, *Rana catesbiana* Shaw in Guangzhou, China, is described. The genus is also a new record in China. Measurements are in millimeter. The type specimen is deposited in Zoology Lab, Department of Biology, Guangzhou Teachers College, Guangzhou, China.

***Cryptotropa lingnanensis* sp. nov.** (Fig. 1)

Hosts: *Rana catesbiana* Shaw. Location in host: Intestine.

Locality: Guangzhou (23°19'N, 113°49'E). Date: 1986.7.20. Body small, slightly oval, with cuticular spines, length 1.1865~1.3755, average 1.281, maximum width 0.6085~0.7035. Oral sucker subterminal, muscular, measuring 0.2425~0.2525×0.240~0.2425(0.2475×0.2412), with prepharynx 0.0250, pharynx measuring 0.0375×0.0350. Oesophagus 0.0625 long. Caeca short. Acetabulum in the middle of body, measuring 0.1450~0.1500×0.1400~0.1450(0.1475×0.1425). The ratio of the two suckers being 1: 1.68. Testes double, near posterior extremity, slightly oval, not tandem but juxtaposed, left 0.2415~0.2475×0.2475~0.3045(0.2445×0.2760), right 0.2310~0.2465×0.3050~0.3360(0.2388×0.3205). Cirrus pouch claviform, containing seminal vesicle, prostatic glands and small cirrus. Male genital pore opening in the middle level of oral sucker. Ovary elliptical shaped, 0.0675~0.075×0.0775~0.0875(0.0713×0.0825). Seminal receptacle existent in the back of acetabulum, measuring 0.0575×0.0650. Vitellaria distributed between the posterior level of oral sucker and the anterior part of testes. Uterus slightly developed, containing a lot of eggs. Egg oval, yellowish, small, 0.0375~0.040×0.020~0.0225(0.0388×0.0213). Excretory bladder V-shaped and arms extending to the level of oral sucker.

The new species differs distinctly from the related *Cryptotropa kuretanii* (Ozaki, 1926) Strand, 1928 in having the different position of ovary, not developed uterus. The ratio of the suckers being 1: 1.16.

Keywords new species. Lecithodendriidae Odhner, *Cryptotropa* Strand, *Cryptotropa lingnanensis*

*Department of Biology, Guangzhou Teachers College